

Apex

Small Deployments Enjoying the Benefits of Full Scale Systems

Apex is an intelligent video management software that enables management and control of live and recorded video, seamlessly integrating analog and digital video components. Designed for small and medium sized deployments, Apex's all-in-one architecture is based on one standard PC serving as the recording server, system and client.

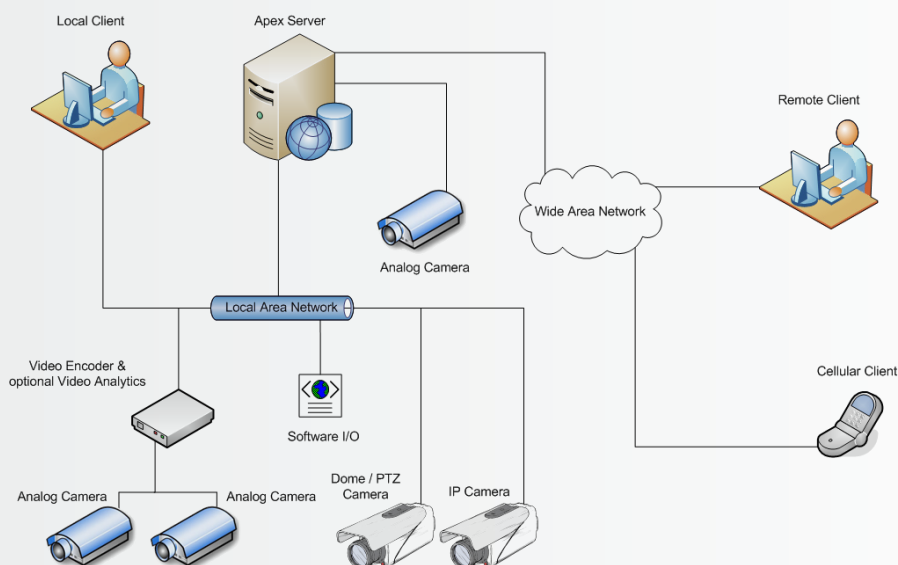
Apex software makes management of small and medium sized video surveillance software more effective, user friendly and flexible than ever before. The system is easy to install, configure and maintain and provides all levels of security personnel with intuitive and reliable control. This enables fast detection of potential threats and emergency event management. Apex is very easy to use and requires minimal training.

The flexibility of the Apex provides quick and easy integration of multi vendor equipment. This enables businesses to cost-effectively deploy advanced IP-based video solutions and upgrade their existing video security systems as security requirements evolve. Users are able to leverage a high return on investment from existing equipment and are able to work with their preferred vendors, to build the most suitable and cost-effective video system tailored to their needs.

Apex Highlights

- **All in One** - One PC serving as a hybrid DVR/NVR solution.
- **Hardware Independent** - Easy integration with best of breed hardware.
- **Cost Effective** - Integrating analog and digital video components.
- **Intuitive User Interface** - Genuinely useful surveillance tools.
- **Advanced Alarm Management** - Configurable triggers, actions and alarm stacking.
- **Remote Access** - Compatible with EVT's Multi System Control Center and Web Interface.

Apex Solution Diagram



Features:

Integration:

- Video devices - Capture cards, encoders, decoders, IP cameras and Mega Pixel cameras
- PTZ cameras and keyboards - All major PTZ protocols
- Third party applications - High level interface via software I/O API
- Video content analysis systems
- RFID / Barcode

Video:

- M-JPEG, MPEG-2, MPEG-4, H.263, H.264
- Up to 15Mbps per channel
- Up to 4CIF@30FPS
- Transcoding Engine for low bandwidth remote client connection

Audio:

- Full / Half Duplex
- G.711

Display:

- User selectable system predefined split screen modes:
 - 4:3 - 1, 2x2, 3x3, 4x4, 1+7, 2+8
 - 16:9 - 1, 3x2, 4x3, 5x4, 1+11, 3+18
- User configurable custom layouts - players, graphics, text, controls etc.
- Display presets for system and custom split screens with assigned channels
- Auto-hide overlay of capture and recording control
- Time & date overlay with on/off and position control

Recording and Playback:

- Manual, event and scheduled system recording
- Recordings of displayed channels
- Instant playback of up to 10 minutes
- Synchronized/unsynchronized playback of all displayed channels
- Normal, X2, X4, X8, X16, frame by frame forward and reverse playback
- Search by channel, time, date, motion and events

Storage:

- Multiple HDD / Partition support
- Network HDD support

Export:

- AVI - To be played with any Windows Media Player, with no software installation as a prerequisite
- Native - Original recorded stream to be played with a standalone player application with Authenticity verification

Logging and Reporting:

- System health diagnostic, messaging and logs
- Alarm events messaging and logs
- User activity audit trail
- Log viewing and report generation application with filtered search engine

User Management:

- User database with login, password and contact details
- User profiles with configurable permissions and access settings
- Dual login option for selected features

Alarm Management:

- Manual and scheduled trigger arm/disarm
- Interactive alarm stack
- Events
 - Configurable system events - server / HDD / device failure
 - Configurable device triggers - digital I/O, VMD, VCA, video loss etc.
 - Configurable soft I/O triggers - third party applications, high level interface
 - Configurable third party video content analysis events
- Actions
 - Recording - Start recording, change recording profile etc.
 - Popups - Channel, layout, etc.
 - Email notification - Text, snapshot, video clip
 - PTZ - Multiple camera preset recall
 - Hardware / Software output activation

Remote Access:

- Control Center with user selectable connection speed
- Web Interface with user selectable access speed